

GREASE SEPARATOR V100 SILT STORAGE - SIZE 1 TO 10

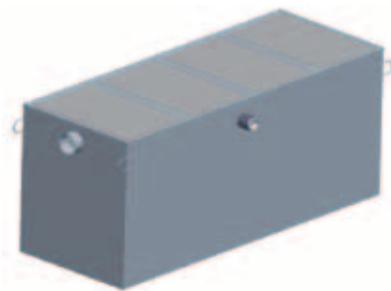
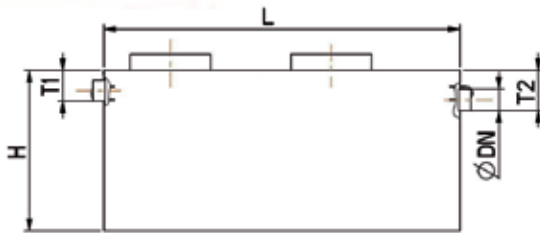
UNDERGROUND INSTALLATION (WITHOUT WATER TABLE) OR ABOVE GROUND
STAINLESS STEEL

BIX

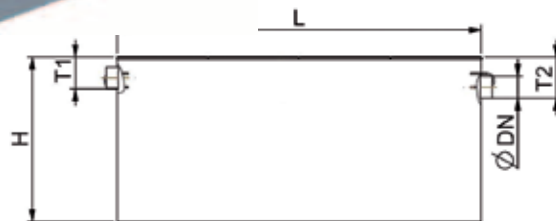
BIXAT



BIX



BIXAT



Technical Definition

These grease separators with silt storage are designed according to standard EN 1825-1 and are CE marked (Decree of 27 January 2006) and operate by gravity flow. The county's health regulations and the code of public health require the installation of grease tanks.

- Made of stainless steel 304 L (EN 1.4307)
- Connection by fitting Female-Female
- Equipped as standard with support for grease level detector.
- Above ground installation or buried, with the possibility of manufacturing on site (contact us)

Option : remote suction, withdrawing device ND 80.

- Manhole(s) (diameter 600, height 120mm) without cover (s)
- Total accessibility with odour proof cover thanks to hydraulic frame(s) 15, 125, 250, 400 kn, and cam, closing type to choose, refer to data sheet RHX.

**20 YEAR
WARRANTY
AGAINST
CORROSION**

Manhole Reference	Total Accessibility Reference	Nominal Size	Silt storage Vol. (l)	Separator Vol. (l)	Grease Vol. (l)	Length (L) mm	Width mm	Height H (mm)	Inlet level (T1) mm	Outlet level (T2) mm	ND connection	Nb Manhole(s)	Weight (kg) empty	Nb Cover (s)	Weight (kg) empty
BIX	BIXAT											BIX	BIXAT		
BI01XAMCH	BI01X025B	1	100	240	71	765	670	915	180	250	110	1	98	1 (575x670)	142
BI02XAMCH	BI02X025B	2	200	711	175	1335	765	1150	180	250	110	1	152	2 (575x670)	241
BI04XAMCH	BI04X025B	4	400	973	246	2000	765	1150	180	250	110	2	195	3 (575x670)	330
BI05XAMCH	BI05X030B	5	500	1324	335	2000	1015	1200	230	300	110	2	280	3 (575x920)	442
BI06XAMCH	BI06X030B	6	600	1827	472	2665	1015	1200	230	300	160	2	342	4 (575x920)	558
BI08XAMCH	BI08X030B	8	800	2239	584	3330	1015	1200	230	300	160	2	404	5 (575x920)	673
BI10XAMCH	BI10X030B	10	1000	2562	696	3995	1015	1200	230	300	160	2	463	6 (575x920)	786

Important : Regular maintenance of this equipment according to standard EN 1825-2 is required. Read the installation instructions concerning steel grease separators.

Manholes : the closing system (extension shaft(s) and cover(s)) according to EN 124, is not supplied.

Total accessibility : this grease separator may be completed by an extension shaft according to the water level (heights are available on request). Beyond a load of 125 kN, the separator is equipped with an extension shaft. See option extension shaft RHX page 29.