

GREASE SEPARATORS APOLLO RANGE

SILT STORAGE V100 - SIZE 1 TO 7
BURIED INSTALLATION (WITHOUT WATER TABLE)
MAXIMUM BACKFILL HEIGHT OF 400MM
POLYETHYLENE (PE)

6612

1 Technical definition

A grease separator is a device designed to separate and store solid matter, fats and oils of animal and vegetable origin contained in household water.

A V100 silt storage zone is integrated in each unit.

Our devices comply with the standard NF EN 1825-1 and are CE marked. The grease retention capacity is 40 liters per l/s.

2 Use

Concerning small communities and professional installations, collective kitchens, restaurants the obligation to install grease separators is based on the standard departmental sanitary regulations and the public health code. **For the food-processing industries** for food industries, it is essential to transmit the CCTP of a technical research department to establish the dimensioning of an adapted device.

IMPORTANT for devices to be buried in groundwater or hydromorphic soil, select a device of the data sheet 6630 page 16.

3 Maintenance

The cleaning company must empty the unit regularly, from 15 days to 2 months, depending on the amount of solids and grease collected.

IMPORTANT after each completed draining, wash the unit and fill it immediately with clean water.

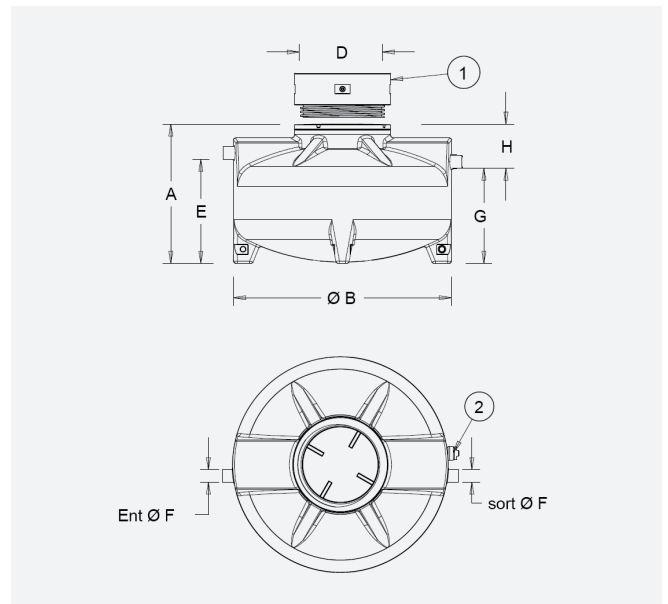
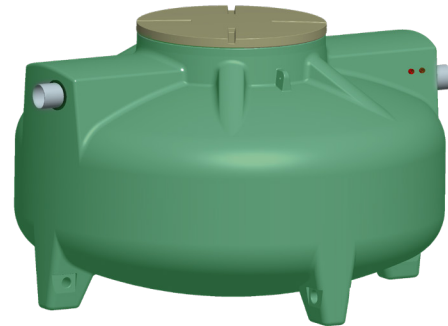
4 Installation

The device must be buried outside of groundwater or hydromorphic soil.

Buried installation :

In case of vehicle traffic or rolling loads or if the height of the backfill is higher than 400 mm above the device, a reinforced concrete slab must be poured, supported on the undisturbed ground, so that the separator is not directly subjected to the loads.

IMPORTANT : Please refer to our website to consult the current documents, especially the installation instructions P045.



5 Remote extraction

Remote extraction in DN80 is possible by ordering the option OD4-BBTN... 1 to 7 (depending on the size). The installer must supply and install a PVC pressure pipe to be connected to the unit outlet and must place the fireman's coupling supplied with the option at the curb.

Reference	Size	A	Ø B	Ø D	E	Ø F	G	H	Volume of sludge trap (l)	Volume Separator (l)	Extraction device option
SG2/6612/01	1	765	1244	600	485	100	415	350	103	262	OD4-BBTN1
SG2/6612/02	2	1059	1244	600	779	100	709	350	205	509	OD4-BBTN2
SG2/6612/03	3	1356	1244	600	1076	100	1006	350	306	756	OD4-BBTN3
SG2/6612/04	4	1100	1720	600	825	100	755	345	416	982	OD4-BBTN4
SG2/6612/05	5	1330	1720	600	975	160	905	425	526	1228	OD4-BBTN5
SG2/6612/06	6	1475	1720	600	1120	160	1050	425	612	1468	OD4-BBTN6
SG2/6612/07	7	1635	1720	600	1280	160	1210	425	722	1720	OD4-BBTN7

Options :

RH602 Polyethylene extension to screw on, height 250 mm
ANG2-3 Level alarm for grease traps
ANG2- 3-N Simplified level alarm for grease traps (1 probe possible)
SNB/SG Sludge probe