

VERTICAL DECOLLOIDER

Ø 160. INLET AND OUTLET

FILTERING MATERIAL POZZOLAN

OR ROT-PROOF HDPE CELLS

POLYESTER (GRP).

Accessories

6367

6368



1 Technical definition

- The decolloider is also known as a prefilter or clogging indicator. It is installed after an all-water tank to prevent premature clogging of downstream installations (landfills, filter beds...). The decolloider acts as a "fuse". Suspended matter is trapped by the filter material contained in the decolloid.
- The ETC 200 cells, made of HDPE, a synthetic, rot-proof and unalterable material, are as effective as pozzolan at a much lower weight (specific surface 300m²/m³, 90% porosity, density 70 kg/m³). These spheres are delivered in a net with a volume of around 500 liters, weighing around 35 kg, and are easy to handle with the gallows during maintenance operations.

2 Installation

- The unit is installed on the outside of the building and must be perfectly level. It must be buried away from vehicle traffic. The cover must be level with the ground and accessible for maintenance. The bottom of the pit must be covered with 10 cm of sand. Backfill with sand or gravel. Water the unit before backfilling.
- Inlets and outlets must be ventilated.



Pozzolan : PZ01 optional. The bags are delivered on pallets.
Cells, ETC included as standard in the product and delivered inside the tank

3 Operation / Sizing

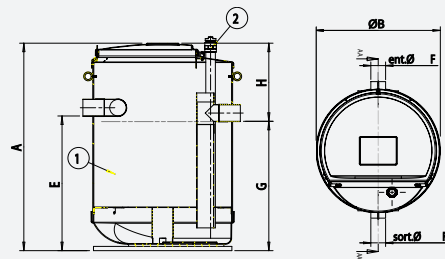
For pozzolana filter media :

- Check the condition of the filter materials. Vacuum the supernatant once a year. Carry out a partial unclogging by backwashing with clear water through the unclogging column. If clogging persists, check whether the tank needs to be emptied. On average, filter material should be changed every 2 years.

For rot-proof HDPE cell filter media :

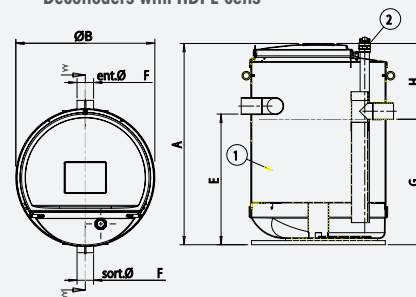
- Suck off supernatant annually. Remove nets and wash with a jet of water, then replace them after emptying the decolorizer. If the "cleaning column" option has been ordered, the filter material can be cleaned by backwashing with clear water.

Decolliders with pozzolan



- 1 - Filter material (not supplied).
- 2 - Cleaning column.

Decolliders with HDPE cells



- 1 - Filter material. Ref. ETC200 (supplied).

OPTIONS

- 2 - Cleaning column for 1000 to 4000 L, Ref. KOD3/DEC10A40 and 5000 to 6000 L, Ref. KOD3/DEC50A60.

Options :

- REL4-089-017-1 Support bracket 150 kg
- KREL4-089-15 150 kg jib crane

Pozzolan	HDPE cells									
Reference	Reference	A	ØB	E	ØF	G	H	Volume of material filtering (liters)	Pozzolan Ref. PZ01 (No. of bags)	
	DEC3/6368/10	1950	1335	1265	160	1215	735	1000	17	
DEC3/6367/15		1955	1635	1260	160	1210	745	1500	25	
DEC3/6367/20	DEC3/6368/20	2155	1635	1460	160	1410	745	2000	34	
DEC3/6367/30		2295	1938	1560	160	1510	785	3000	51	
DEC3/6367/40		2380	2340	1660	160	1610	770	4000	68	