

5496

## UNCLOGGING

### Porthole connection seals

PVC	Reference	Designation
	JVH125	pVC inlet ø125
	JVH160	pVC inlet ø160
	JVH200	pVC inlet ø200
	JVH250	pVC inlet ø250
	JVH315	pVC inlet ø315
	JVH400	pVC inlet ø400



### Hole saws

PVC	Reference	Designation
	AD699-125	for gasket JVH125
	AD699-160	for joint JVH160
	AD699-200	for gasket JVH200
	AD699-250	for gasket JVH250
	AD699-315	for gasket JVH315
	AD699	for gasket JVH400



## PARASITE

### Connection seals

PVC	Reference	Designation
	AD653-125	pVC inlet ø125
	AD653-160	pVC inlet ø160
	AD653-200	pVC inlet ø200



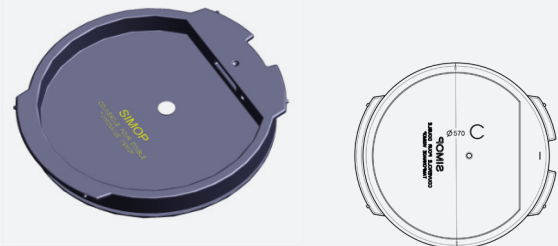
### Hole saws

PVC	Reference	Designation
	AD692-125	for joint AD653-125 (for ø125 PVC pipe)
	AD692-160	for joint AD653-160 (for ø160 PVC pipe)
	AD692-200	for joint AD653-200 (for ø200 PVC pipe)

## WATERTIGHT LID

Polyethylene cover to be placed on the manhole head (under the cast iron cover). Single-lip seal. Observed leak rate: 0.013l/min/m of gasket under 0.3M CE.

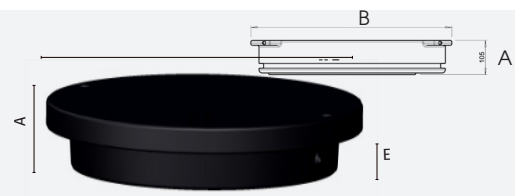
Reference	A	B	C
CV2/570	105	Ø 630	Ø 570



## ANTI-GRAVEL COVER

Polyethylene cover to be placed over the manhole head. To protect networks and personnel during work.

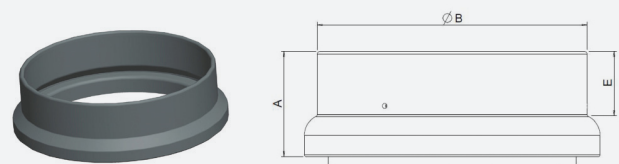
Reference	A	B	E
CU4204-N	105	Ø 630	150



## HEIGHT ADAPTER

Made of polyethylene, to be placed on the manhole head. Its use should be the exception rather than the rule, as it removes the guarantee from the manhole as it will no longer be watertight.

Reference	A	Ø B	E
AHV612	245	630	150



## SEALING RINGS

Reference	Designation
AD666-0630	Manhole head seal / concrete distributor



## CONCRETE LOAD-DISTRIBUTING DEVICES



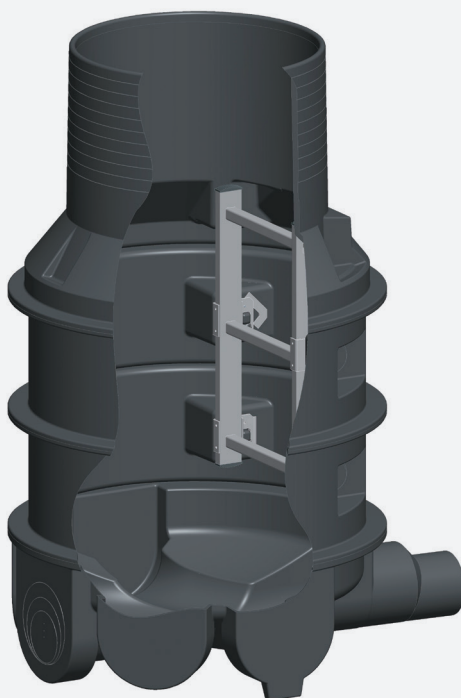
\* see data sheet 5498

# SCALE/STEP FOR VISIMOP II MANHOLE ACCESS

5496

## 1 Installation

**VISIMOP II 5464 manholes** can be fitted with an access ladder. Ladders comply with standard NF EN 131-1.



LADDER FOR MANHOLE Ø 800 - 5  
ENTRIES  
(Data sheet 5464)

LADDER FOR MANHOLE Ø 800 - 3  
ENTRIES  
(Data sheet 5470)

GAZE REFERENCE	Scale reference or adapted step	GAZE REFERENCE
5464D09PV-09	NOT EQUIPPABLE	5470D16PV-11
5464D09PV-12	KIT 147- 2ECH	5470D16PV-14
5464D09PV-15	AH147-15	5470D16PV-17
5464D09PV-18	AH147-18	5470D16PV-20
5464D09PV-21	AH147-21	5470D16PV-23
5464D09PV-24	AH147-24	5470D16PV-26
5464D09PV-26	AH147-26	5470D16PV-27
5464D09PV-29	AH147-29	5470D16PV-30
5464D09PV-32	AH147-32	5470D16PV-33
5464D09PV-35	AH147-35	5470D16PV-36
5464D09PV-38	AH147-38	5470D16PV-39
5464D09PV-41	AH147-41	5470D16PV-42