

NEUTRALIZATION FILTER WITH SMALL OR LARGE DILUTION VOLUME

POLYETHYLENE (PE)

6890

1 Technical definition

A polyethylene neutralisation filter is a device designed to neutralise battery acids (H₂SO₄) that may be discharged into the network following the cleaning of a storage area or an accidental acid spill

Features :

- the tank is made of high-density polyethylene,
- the basket is made of polyethylene with a stainless steel grid,
- the basket lifting handle is made of galvanised steel,
- PVC fittings,
- the 400 mm diameter screw-on cover is made of polyethylene,
- crushed marble (supplied with the filter) :
 - 75 kg for FN2/500
 - 100 kg for FN2/950

2 Operation

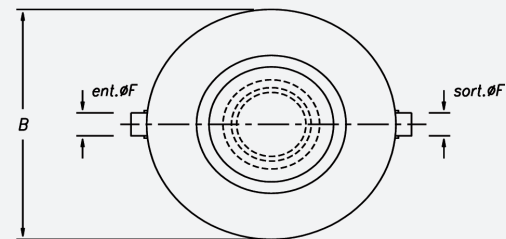
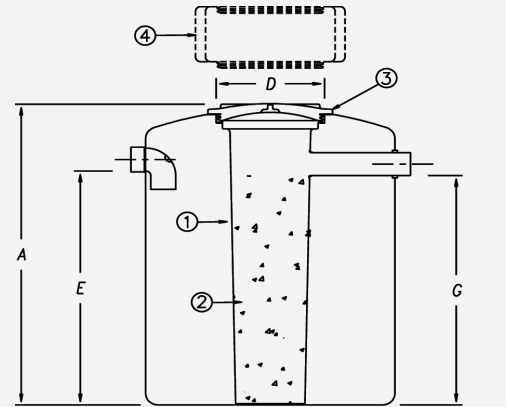
Acid-laden water enters the appliance through the immersion elbow . Heavy matter settles to the bottom . The acid-laden effluent passes through the layer of marble and exits the unit. The acid is neutralised by consuming the marble.

3 Maintenance

This polyethylene device is impervious to corrosion . It requires no special maintenance . The marble must be topped up regularly, as it is consumed by acid.



IMPORTANT : Every six months, the appliance must be completely drained and cleaned . Fill it with clean water after draining , using a hose with a diameter appropriate to the volume of the appliance.



- 1 - Polyethylene basket with stainless steel grid
- 2 - Crushed marble
- 3 - Screw-on cover Ø 400
- 5 - Screw-on extension shaft RH 502 or RH 505 Optional

4 Installation

The unit will be buried outside the building, as close as possible to the area to be treated . The cover should be level with the ground . The bottom of the pit must be perfectly flat and covered with 10 cm of sand.

Backfilling should be done with sand, and never with stone or gravel. The device should be filled with water at the same time as backfilling . In the event of vehicles passing within a radius of 3 m, overloads or a backfill height of more than 500 mm in relation to the outlet water line, the device must be installed with a polyethylene extension anchored in a concrete slab resting on the undisturbed ground around the device (so that the separator is not directly subjected to loads).

The inspection plug(s) must always remain accessible for maintenance.

Reference	A	øB	øD	E	øF	G	H	Volume (liters)
FN2/500	1085	790	400	815	100	795	290	390
FN2/950	1290	1000	400	1020	100	1000	290	780

Options :

- MAB05 Crushed marble, bag of 25 kg. (for replacement)
- RH50 Screw-on polyethylene extension shaft Ø 400 height 250 mm
- RH505 Screw-on polyethylene extension shaft Ø 400 height 500 mm