

STARCH SEPARATORS

APOLLO RANGE, SIZE 1 TO 5

IN-GROUND OR ABOVE-GROUND INSTALLATION

MAXIMUM BACKFILL HEIGHT OF 800 MM

POLYETHYLENE (P)

6636

1 Technical definition

A starch separator is a device designed to break down foam and store any solids.

A starch foam spray system is installed above the effluent inlet from the potato peeler.

The spray system must be controlled by the peeler.

2 Use

For small communities and professional facilities such as kitchens and restaurants the obligation to install grease separators stems from the standard departmental sanitary regulations and the public health code.

4 Installation

Buried installation :

The unit is to be installed underground, in the presence of groundwater or in hydromorphic soil whose level does not exceed the upper generatrix of the unit.

Where vehicles pass over the separator, or where the height of the backfill above the separator exceeds 800 mm, a reinforced concrete slab should be poured, supported on the undisturbed ground, so that the separator is not directly subjected to the loads.

IMPORTANT : Respect the recommendations of the installation sheet P046. Ventilation ; see notice C010.

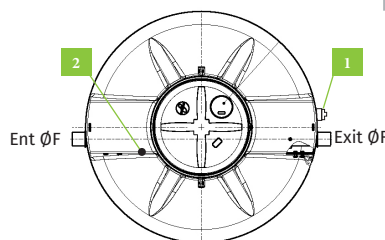
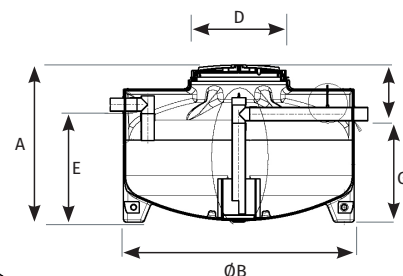
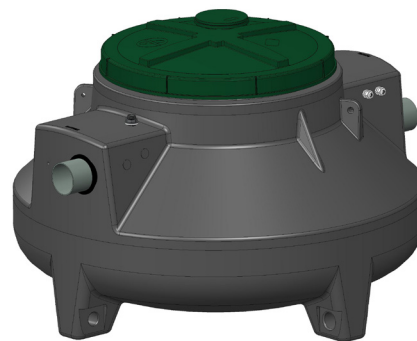
Elevation installation :

The unit must be installed level on a perfectly flat and smooth surface. The cover must always remain accessible for maintenance.

IMPORTANT : Please refer to our website for current documentation. For above-ground installation, the room must be equipped with a water collection and drainage system to prevent flooding in the event of overflow

GARANTIE
CONTRE LA
CORROSION
JUSQU'À
20 ANS

CE
EN 1825-1



1 - DN80 extraction device.
Option
2 - Threaded connection 20x27
(3/4") for spray nozzle

5 Remote extraction

Remote extraction DN80 is possible by ordering option **OD4-BBTN 1 to 5** (depending on size). The installer must supply and install a PVC pressure suction pipe to be connected to the unit outlet, and must place the fireman's connector supplied with the option at the curb.

Reference	Size	A	Ø B	Ø D	E	Ø F	G	H	Volume of sludge trap (l)	Volume Separator (l)	Extraction device option
SF2/6636/01-1	1	832	1244	600	485	100	415	416	103	262	OD4-BBTN1
SF2/6636/02-1	2	1126	1244	600	779	100	709	416	205	509	OD4-BBTN2
SF2/6636/03-1	3	1423	1244	600	1076	100	1006	416	306	756	OD4-BBTN3
SF2/6636/04-1	4	1167	1720	600	825	100	755	412	416	982	OD4-BBTN4
SF2/6636/05-1	5	1397	1720	600	975	160	905	492	526	1228	OD4-BBTN5
SF2/6636/06-1	6	1542	1720	600	1120	160	1050	492	612	1468	OD4-BBTN6
SF2/6636/07-1	7	1702	1720	600	1280	160	1210	492	722	1720	OD4-BBTN7

Options :

RH2/6031 Screw-on extension, can be cut to size, height 300mm