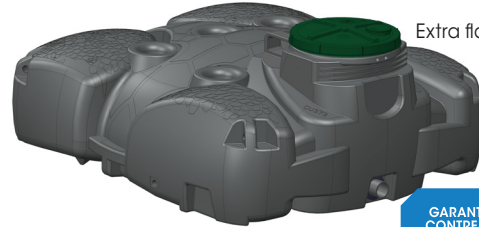


EXTRA-FLAT AQUAMOP 3 AND 5 M³ OUTPUT WITH REGULATED FLOW RATE FROM 0.2 TO 2.5/L/S
POLYETHYLENE (PE) UNDERGROUND AND OVERHEAD INSTALLATION

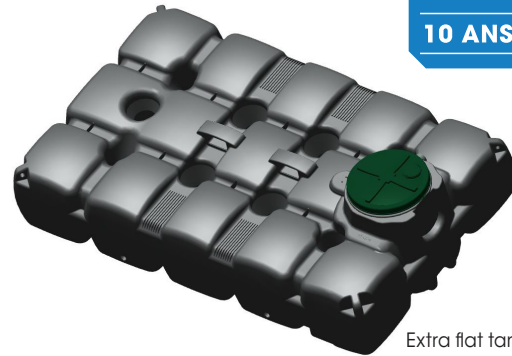
6022-REG-PLA

Extra flat tank 3m³



GARANTIE
CONTRE LA
CORROSION
JUSQU'À
10 ANS

Extra flat tank 5m³



1 Technical definition

The rainwater harvesting system collects roof water, stores it and then makes it available to the user via a pumping system. This tank is equipped with a flow regulation system. Half of the total tank volume can be reused, and the other half regulated.

2 Operation

Collected water flows into the tank by first passing through a downspout filter (not supplied) and then the tank filter, which has a filtration fineness of less than 1 mm. An anti-removal device ensures that the heaviest fine matter that has settled is not resuspended. A buffer zone regulates the flow rate to a given set point, while an overflow (unregulated) discharges water to the network or downstream hydraulic environment to prevent flooding upstream of the system.

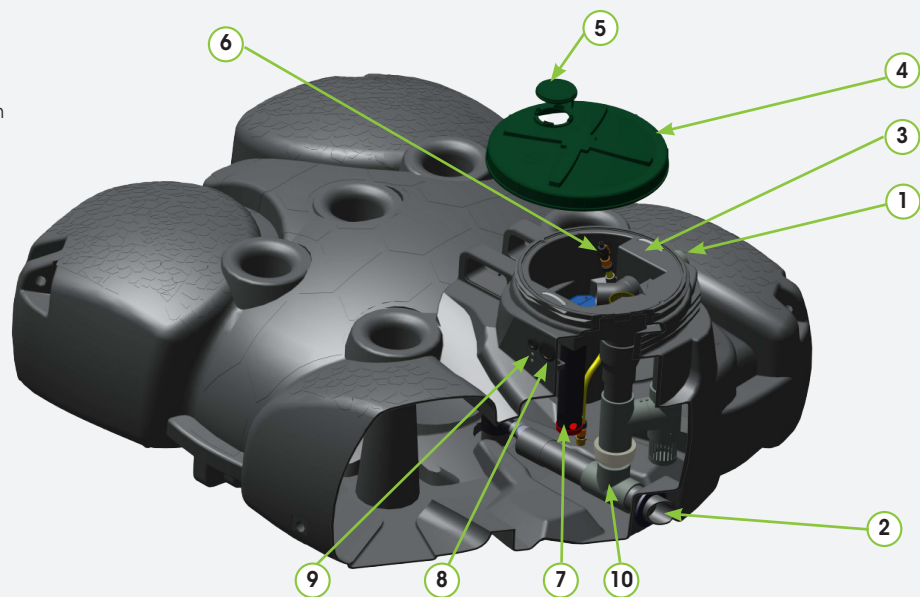
3 Installation

SIMOP extra-flat tanks can be installed above or below ground. In the latter case, please refer to the PHPEPLA installation instructions.

4 Maintenance

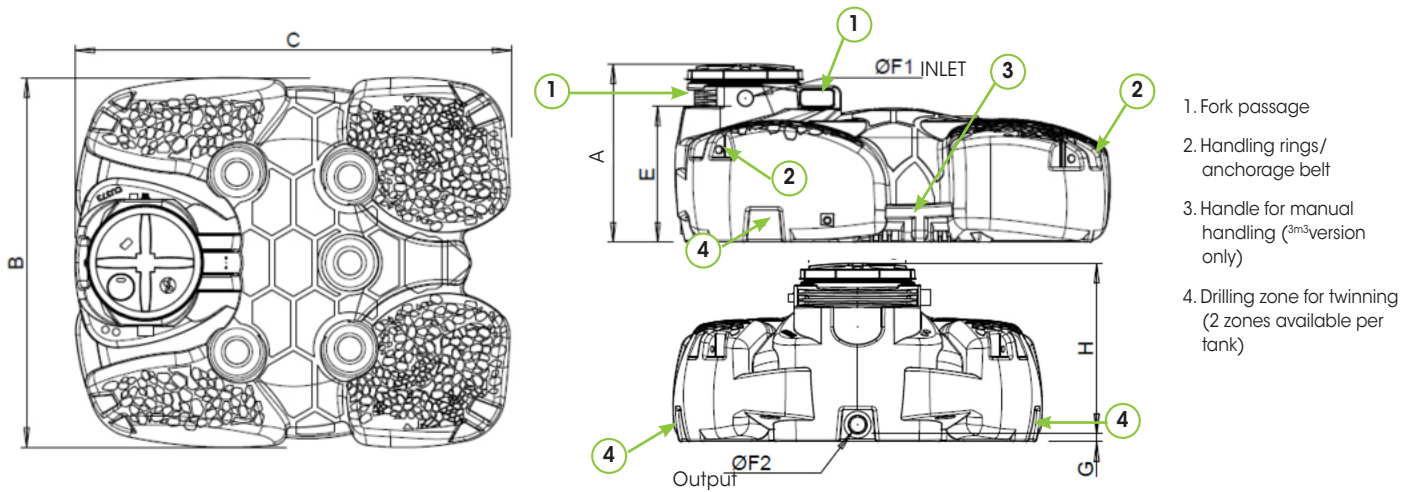
- Inlet filter cleaning
- Check condition of suction strainer
- Emptying: complete emptying at the end of summer, with cleaning and suction of deposits at the bottom of the tank before refilling in winter.
- Clean the control system periodically.

1. DN100 inlet
2. DN100 outlet
3. Collector system with handles, including fixed 5mm filter and removable 1mm mesh basket
4. Screw-on lid
5. Access hatch for quick connection
6. Integrated discharge kit, quick-fit coupling with valve for connection to DN19 pipe for submersible pump with 1" thread.
7. Anti-burrow tube
8. Drilling with DN25/32 porthole seal for submerged pump electrical cable entry
9. Hole with DN50/63 porthole seal for suction tube passage (to be used if KPI-1/KASP6/KRAL32-1 kit is connected)
10. Flow control system with overflow



EXTRA-FLAT AQUAMOP 3 AND 5 M³ OUTPUT WITH REGULATED FLOW RATE FROM 0.2 TO 2.5L/S

POLYETHYLENE (PE) UNDERGROUND AND OVERHEAD INSTALLATION



Reference	Volume	A	B	C	ø D	E (inlet thread)	INLET ø F1	Output ø F2	G (outlet thread)	H	Weight (Kg)	Total volume (L)	Storage volume (L)	Buffer volume (L)
CEPREG/03P	3000 L	1099	2280	2700	600	840	100	110	58	1041	182	3000	1500	1500
CEPREG/05 P	5000 L	1099	2280	3500	600	840	100	110	58	1041	252	5000	2500	2500

Supplied with delivery kit for sprinklers with quick-release coupling





IMPORTANT see page 3/3 to define the nozzle reference to be added.

5 Options

PP58/06-1	Submersible and surface pumps	See FT 6032
PP58/11	Pumping kit with manager	
CA3/10/3T/2	Set of 2 3-ton anchoring belts for 3, 4, 5 and 6 m pits ³	
FDG12	Simplified downspout filter	
FGU11	UV filtration system	
RH2/6031	Screw-on extension, can be cut to size, height 300mm	
KITJUM50	DN50 quick coupling kit	See FT 6022AC
KASP6	Kit for connection to overhead pump via DN25 compression fitting, equipped with strainer and float at suction into tank	
KRAL32-1	7m extension kit (can be cut to length if required) for OPAL POOLHOSE DN25 reinforced flexible PVC pipe, with 1" threaded compression fitting and 1" compression fitting.	
KPI-1	Discharge kit for submersible pump, connection to a 1" pump and discharge via a DN25 compression fitting, additional connection of the integrated discharge kit (quick coupling) to the 1" T	

EXTRA-FLAT AQUAMOP 3 AND 5 M³ OUTPUT WITH REGULATED FLOW RATE FROM 0.2 TO 2.5L/S

POLYETHYLENE (PE) UNDERGROUND AND OVERHEAD INSTALLATION

	Submersible pump (in tank)			Surface pump	Water manager
	Watering			Watering	WC, washing machine, sprinkler system
	Quick coupling	Tap	Quick connector + tap		
Integrated discharge kit (included) 	including		including		
KPI-1 			1		
KRAL32-1 		1	1+	1	1
KASP6 				1+	1+
				1	1

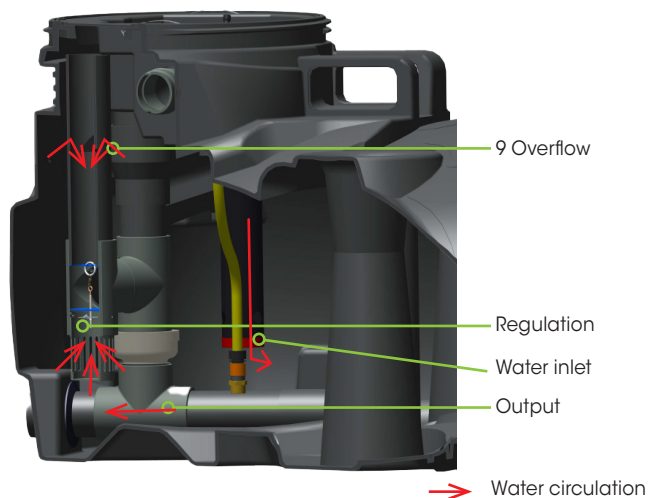
Example : I want to integrate a submersible pump in my tank for watering the garden. I'd like to connect both to a tap and from the quick connector built into my tank.

I'll need the following options:

- **Discharge kit (already included)**
- **KPI-1**
- **KRAL32-1**

EXTRA-FLAT AQUAMOP 3 AND 5 M³ OUTPUT WITH REGULATED FLOW RATE FROM 0.2 TO 2.5L/S

POLYETHYLENE (PE) UNDERGROUND AND OVERHEAD INSTALLATION



6 Operation of the regulation

The collected water is filtered and regulated at a set flow rate by a removable, immersed, interchangeable adjusted plate system. A screen retains the settled elements and avoids disturbing or even obstructing the adjusted regulation zone. The self-cleaning core, which rotates around the calibrated diaphragm, also prevents clogging. In the event of heavy rainfall, if the set flow rate is insufficient, water will also flow through the (unregulated) overflow.

7 Defining references

1. Select the output flow rate in the "Output flow rate (L/s)" column.
2. Select the storage volume in the "Storage volume (m³)" column.
3. Deduce the tank reference and the limiter base reference.

Example of choice :

Outlet flow 0.4 L/s, storage volume 2.5m³ and buffer volume 2.5 m³

The tank reference will be **CEPREG/05P** and add the nozzle reference **BREG2005**

Output flow (L/s)	Storage volume (m ³)	Buffer volume (m ³)	Tank reference	Part no. flow restrictor base
0.2	1.5	1.5	REGU/5747/3PLAT	BREG2015
	2.5	2.5	REGU/5747/5PLAT	BREG2015
0.3	1.5	1.5	REGU/5747/3PLAT	BREG1805
	2.5	2.5	REGU/5747/5PLAT	BREG1805
0.4	1.5	1.5	REGU/5747/3PLAT	BREG2005
	2.5	2.5	REGU/5747/5PLAT	BREG2005
0.5	1.5	1.5	REGU/5747/3PLAT	BREG2305
	2.5	2.5	REGU/5747/5PLAT	BREG2305
0.75	1.5	1.5	REGU/5747/3PLAT	BREG2910
	2.5	2.5	REGU/5747/5PLAT	BREG2910
1	1.5	1.5	REGU/5747/3PLAT	BREG3310
	2.5	2.5	REGU/5747/5PLAT	BREG3310
1.25	1.5	1.5	REGU/5747/3PLAT	BREG3815
	2.5	2.5	REGU/5747/5PLAT	BREG3815
1.50	1.5	1.5	REGU/5747/3PLAT	BREG4115
	2.5	2.5	REGU/5747/5PLAT	BREG4115
1.75	1.5	1.5	REGU/5747/3PLAT	BREG4105
	2.5	2.5	REGU/5747/5PLAT	BREG4105
2	1.5	1.5	REGU/5747/3PLAT	BREG4715
	2.5	2.5	REGU/5747/5PLAT	BREG4715
1.25	1.5	1.5	REGU/5747/3PLAT	BREG4705
	2.5	2.5	REGU/5747/5PLAT	BREG4705
2.50	1.5	1.5	REGU/5747/3PLAT	BREG5005
	2.5	2.5	REGU/5747/5PLAT	BREG5005