

## EXTENSIONS & ANCHORING ACCESSORIES

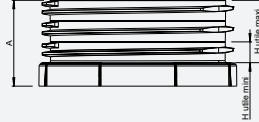
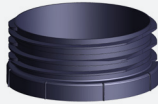
### BIONUT 2

#### Accessories

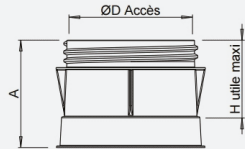
6062

#### ENHANCER OF ALL WATER TANKS

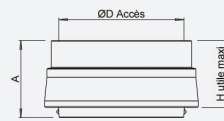
RH2/4031-15  
FTE : 3 M<sup>3</sup>



RH2/03/15  
FTE: 4,5,6,8 & 10 M<sup>3</sup>

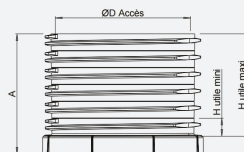


RH2/6030  
FTE: 6, 8 & 10 M<sup>3</sup>



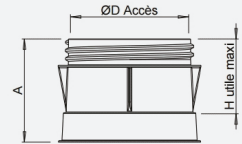
#### EXTENSIONS LIFTING STATION

RH2/4031  
RELBIONUT-B2



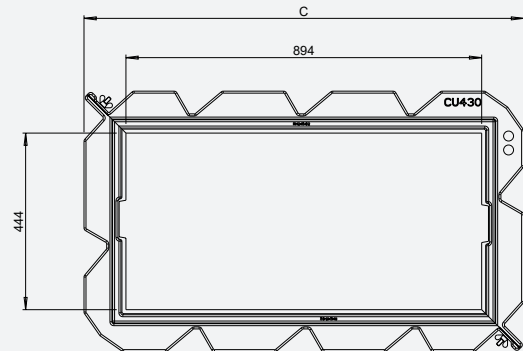
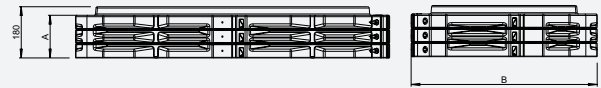
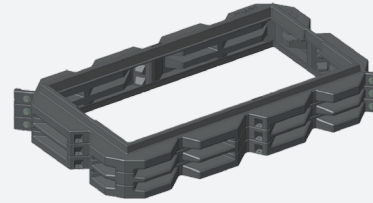
#### MANHOLE COVERS AND BUCKET FLUSH

RH2/03/15

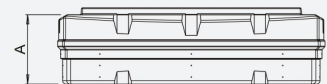


#### EXTENSIONS BIONUT

RH2/15/B2



RH2/3030/B-3



Reference	Designation	A	ØD Access	H utile min	Max. useful H
RH2/4031-15	Manhole extension to be screwed on, cuttable every 5 cm	207	Ø400	50	150
RH2/03/15	Diffuser extension for all water pit or floating trough	200	Ø220	150	150
RH2/6030	All-water tank extension 6, 8 and 10 m <sup>3</sup>	357	Ø600	300	300
RH2/4031	Manhole extension and lifting station to be screwed on, can be cut every 5 cm	357	Ø400	50	300

Reference	Designation	A	B	C
RH2/15/B2	BIONUT 150 mm extension - to assemble	150	740	1170
RH2/3030/B-3	Set of 3 non-adjustable 300 mm BIONUT extensions	300	740	1170

Fitted as standard with BIONUT2 4 and 8 EH filters

			Composition of extension packs			
						
			RH2/03/15	RH2/4031-15	RH2/15/B2	RH2/4031
Height	In mm	Industry references	150	150	150	300
OUTLET LOW	4 EH	BIONUT2/6054/04 or 04SN		2	1	
	5 EH	BIONUT2/6054/05 or 05SN		2	1	
	6 EH	BIONUT2/6054/06 or 06SN		2	1	
	8 EH	BIONUT2/6054/08 or 08SN	1	1	2	
OUTLET HIGH	4 EH	BIONUT2/6054/04SH or 04SNSH		2	1	1
	5 EH	BIONUT2/6054/05SH or 05SNSH		2	1	1
	6 EH	BIONUT2/6054/06SH or 06SNSH		2	1	1
	8 p.e.	BIONUT2/6054/08SH or 08SNSH	1	1	2	1

WASTEWATER TREATMENT

Bionut2 anchoring accessories

		WITH STRAPS (either fixed to the anchor bars or simply passed through the tank inserts at the bottom)	WITH STRAPS (either fixed to the anchor bars or simply passed through the tank inserts at the bottom)		
			WITHOUT WINCH	WITH WINCH	
Capacity	KANCRB2 = 1 anchor bar AD254 + 2 pins BV170-8-100		Set of 2 anchoring belts <b>CA3/10/3T/2</b>	Set of 3 anchoring belts * <b>CA3/10/3T/3</b>	Single anchor belt <b>CA3/6394/10T</b>
4 EH	2	1		2	
5 EH	2	1		2	
6 EH	2	1		2	
8 EH		2		4	
10 EH	4	3		6	
12 EH	4	3		6	
16 EH		2	1	6	
18 EH	6	3	1	8	
20 EH	8	4	1	10	

\* For 8 and 10 m FTEs<sup>3</sup>

# SOCKETS & ANCHORING ACCESSORIES

6062

## Overview of optional extensions and extension packs.

Each pack contains							
Hauteur	En mm	Références des packs	RH2/03/15	RH2/4031	RH2/6030	RH2/15/B2	RH2/30/B-1
OUTLET LOW	4 à 6 PE	RHV/BIONUT2/456/SB	150	300	300	150	
	4 à 6 PE	RHV/BIONUT2/SB		2		2	1
	8 PE	RHV/BIONUT2/08/SB	2	1		4	
	10 PE	RHV/BIONUT2/10/SB	4	1		4	
	12 PE	RHV/BIONUT2/12/SB	2		1	4	
	16 PE	RHV/BIONUT2/16/SB	2		1	8	
	18 PE	RHV/BIONUT2/18/SB	4		2	6	
	20 PE	RHV/BIONUT2/20/SB	4		2	8	

OUTLET HIGH	4 à 6 PE	RHV/BIONUT2/456/SH		3		2	
	4 à 6 PE	RHV/BIONUT2/SH		3			1
	8 PE	RHV/BIONUT2/08/SH	2	2		4	
	10 PE	RHV/BIONUT2/10/SH	4	2		4	
	12 PE	RHV/BIONUT2/12/SH	2	1	1	4	
	16 PE	RHV/BIONUT2/16/SH	2	1	1	8	
	18 PE	RHV/BIONUT2/18/SH	4	1	2	6	
	20 PE	RHV/BIONUT2/20/SH	4	1	2	8	

## Type and number of extensions per equipment

Septic tank only	4, 5, 6 PE	FTE03000BI Diffuser input		1			
		FTE03000BI Pre-filter outlet		1			
	8 PE	FTE2/6009/04 Diffuser inlet	2				
		FTE2/6009/04 Pre-filter outlet		1			
	10 PE	FTE2/6009/05 Diffuser inlet	2				
		FTE2/6009/05 Pre-filter outlet		1			
	12 PE	INR06000 Pre-filter outlet			1		
	16 PE	INR08000 Pre-filter outlet			1		
18, 20 PE	FTE2/6309/10 Diffuser inlet			1			
	FTE2/6309/10 Pre-filter outlet			1			

Auget	AF2/6016/055 ( 18 & 20 EH )	2				
Manhole	REP2/04/04 ( > 8 EH )	2				

Compact filter only	4, 5, 6 PE	BIONUT2/6054/04 - 05 - 06				2	
	8 PE	BIONUT2/6054/08				4	
	10 PE	BIONUT2/6054/10				4	
	12 PE	BIONUT2/6054/12				4	
	16 PE	BIONUT2/6054/16				8	
	18 PE	BIONUT2/6054/18				6	
	20 PE	BIONUT2/6054/20				8	

Lifting	RELBIONUT-B2		1				
---------	--------------	--	---	--	--	--	--