

KITODRAIN

INFILTRATION OF WASTEWATER FROM UNITS <20 P.E.

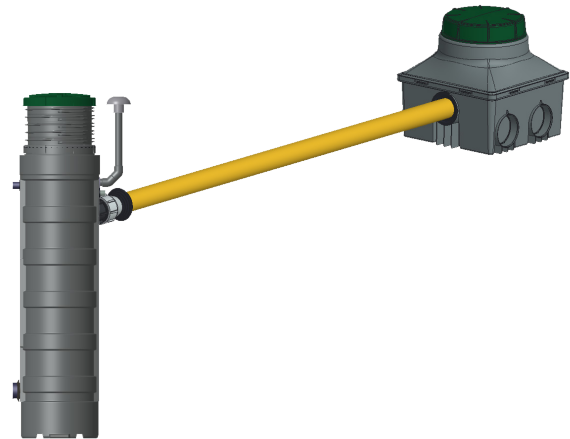
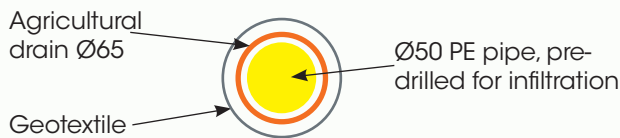
6070

1 Technical definition

Kitodrain reuses wastewater from a compact filter or microstation to irrigate ornamental plants.

As surface watering with wastewater is prohibited, Kitodrain is an excellent underground watering alternative. It allows you to cope with water stress at certain times of the year, and also saves water in hot weather.

KITODRAIN composition



2 Functioning

Kitodrain has been developed to complement Bionut compact filters and Bioxmop micro-stations. It can also be installed with the main solutions on the market.

The purified water leaving the system is directed to a lifting station, which returns the effluent to the kitodrain. The kitodrain is placed at the foot of hedges or flowerbeds. The water is conveyed under slight pressure. The length of the kitodrain should be adapted to the permeability of the soil. Plants with evergreen foliage, high water requirements, underdeveloped root systems and no wood should be preferred.

It works with all types of soil permeability, a criterion to be taken into account when sizing the trench.

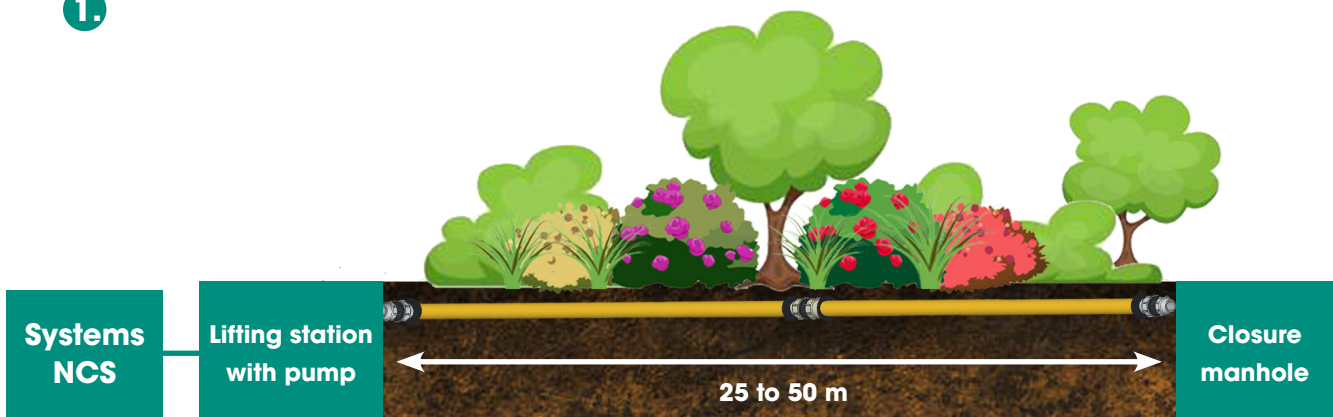
3 Maintenance

Kitodrain requires little maintenance. A visual check can be carried out once or twice a year in the manhole positioned at the opposite end of the pump, to ensure that it is not obstructed.

In the event of clogging, it may be necessary to send pressurized water through the end of the drain into the loop manhole.

5 Typical installations

1.



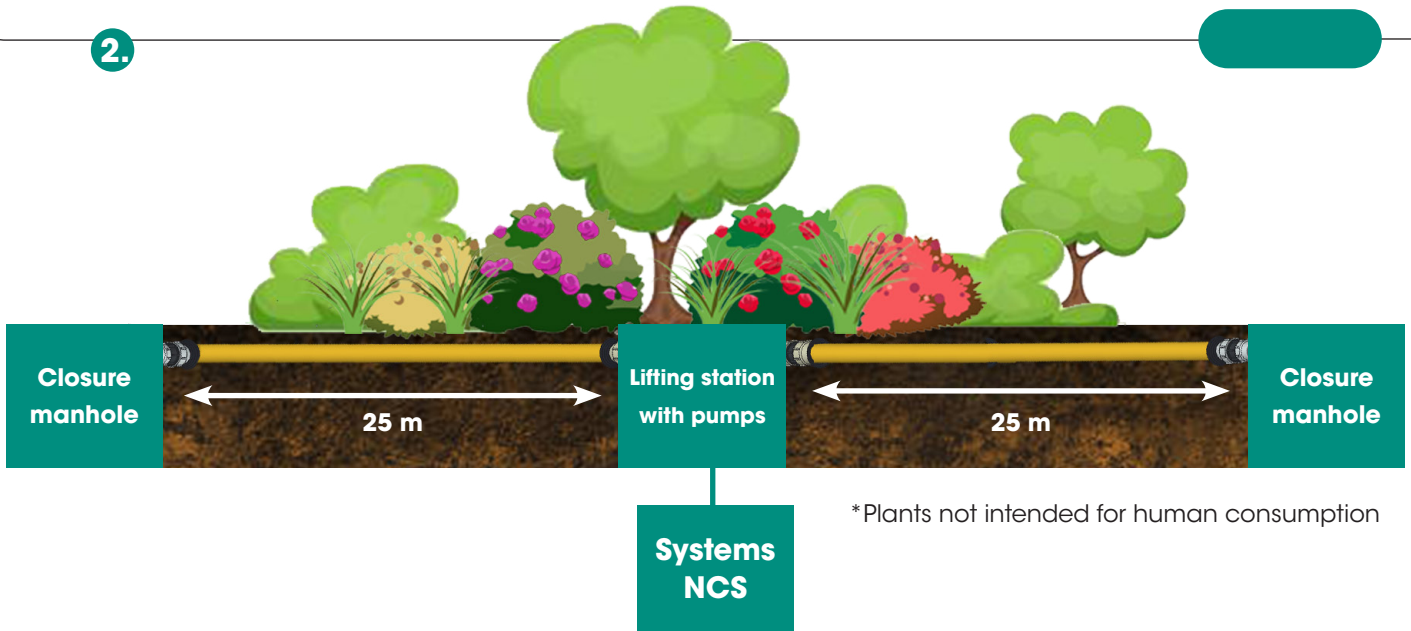
*Plants not intended for human consumption

KITODRAIN

INFILTRATION OF WASTEWATER FROM UNITS <20 P.E.

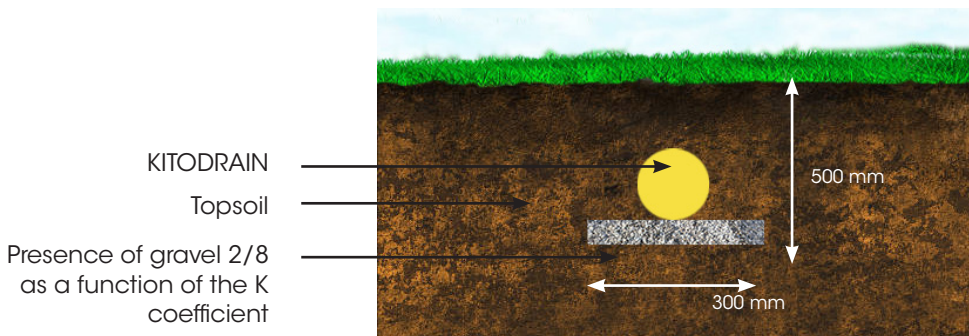
Give the best back to earth

2.



3.

Install the KITODRAIN in a **drainage trench** sized according to the permeability coefficient of the soil (see table).
The required infiltration surface will be 7.5M² for the 25m version and 15M² for the 50m version



Trench sizing based on soil permeability coefficient

Number of PE	25m trench	25m trench with 125mm gravel (2/8 at bottom of trench)	50m trench	50m trench with 125mm gravel (2/8 at bottom of trench)
4	K ≥ 20	3.6 < K < 20	K ≥ 6	3.6 < K < 6
5			K ≥ 10	3.6 < K < 10
6				
7	K ≥ 36	6 < K < 36	K ≥ 20	3.6 < K < 20
8		10 < K < 36		
9		20 < K < 36		
10				
11	K ≥ 50	36 < K < 50	K ≥ 36	6 < K < 36
12				10 < K < 36
13				20 < K < 36
14	K ≥ 360	50 < K < 360	K ≥ 36	6 < K < 36
15				10 < K < 36
16				20 < K < 36
17				36 < K < 360
18				36 < K < 360
19				50 < K < 360
20				50 < K < 360

KITODRAIN

INFILTRATION OF WASTEWATER FROM UNITS <20 P.E.

Give the best back to earth

5 Composition



(a) Junction sleeve



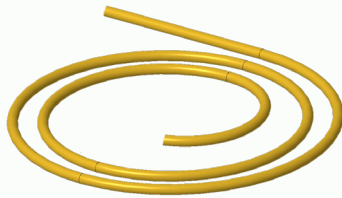
(b) Sleeve T



(c) 90° elbow



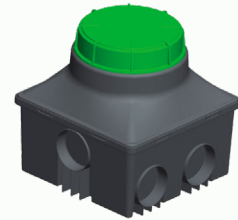
(d) Plug



(e) Infiltration pipe 25m



(f) AD100-50 multi-diameter gasket



(g) Inspection window

References	Composition	References	Quantity
KITODRAIN-25	Manhole cover (g)	REP2/04/04	1
	Multi-diameter gasket (f)	AD100-50	3
	Infiltration kit including 1x 25m pipe with drain (e), 40/50 connecting sleeve (a), 1 wing plug (d)	INFI-25	1
KITODRAIN-50	Manhole cover (g)	REP2/04/04	1
	Multi-diameter gasket (f)	AD100-50	3
	Infiltration kit comprising 2 x 25m pipe with drain (e), connecting sleeve (a) 1 x wing plug (d), 1x connecting sleeve (a)	INFI-25	1
KITODRAIN-50-1	Manhole cover (g)	REP2/04/04	2
	Multi-diameter gasket (f)	AD100-50	6
	Infiltration kit including 2 x 25m pipe with drain (e), 1x T 40/50 sleeve (b), 2 x 90° elbows (c) 1 fin plug (d)	INFI-25	1