

Give the best back to earth

CAX CAXAT

GREASE AND STARCH SEPARATORS SEPARATORS V100 SLUDGE TRAP AND DN80 EXTRACTION DEVICE MANHOLE PRIMER OR TOTAL ACCESSIBILITY

SIZES 1 TO 8 - IN-GROUND (WITH OR WITHOUT WATER TABLE) OR
ABOVE-GROUND INSTALLATION
MAXIMUM BACKFILL HEIGHT OF 500 MM - 304L STAINLESS STEEL

1 Technical definition

A combined grease and starch separator is a device designed to separate and store animal and vegetable solids, fats and oils from household wastewater, and to retain peeling waste.

A starch foam spray system is installed above the effluent inlet from the potato peeler. The spray system must be controlled by the potato peeler. A V100 silt storage zone is integrated into each unit. Grease retention capacity is 40 liters per l/s. Manufactured in 304 L stainless steel (EN 1.4307).

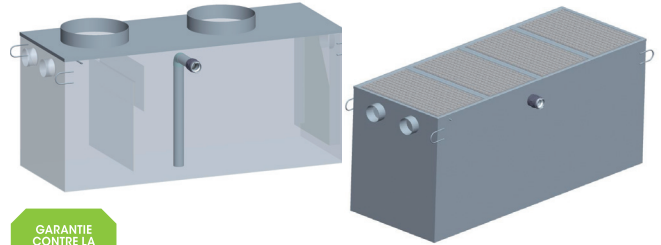
Fitted as standard with a support for a grease level detector. Underground installation, can be manufactured on site (consult us). Chimney primer(s) (diameter 600, height 120mm). **Without cover(s), extension system(s) and cover(s) to EN 124 are not supplied by SIMOP.**

2 Use

Concerning small communities and professional installations, collective kitchens, restaurants the obligation to install grease separators is based on the standard departmental sanitary regulations and the public health code. **For the food-processing industries** for food industries, it is essential to transmit the CCTP of a technical research department to establish the dimensioning of an adapted device.

3 Installation

IMPORTANT please refer to our website to consult the current documents installation instructions P108 & P109. For above-ground installation, the room must be equipped with a water collection and drainage system to prevent flooding in the event of overflow



GARANTIE CONTRE LA CORROSION JUSQU'À
20 ANS



4 Maintenance

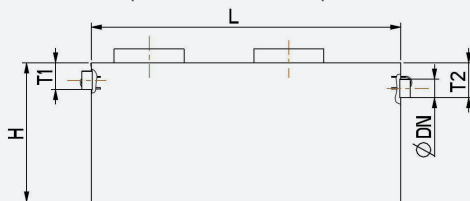
The separator should be checked, emptied and cleaned regularly, and attention drawn to the need to comply with national or local regulations on waste disposal. The frequency of inspection, emptying and cleaning should be determined by the grease and sludge storage capacity of the separator and by operational experience.

Unless otherwise specified, the separator should be drained, cleaned and refilled with clean water at least once a month, and preferably every 15 days (EN 1825-2 standard).

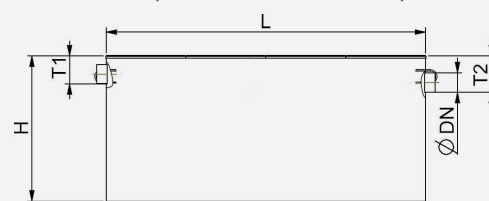
5 Remote extraction

Remote suction DN 80 suction device. The installer must supply and install a pressurized PVC suction pipe to be connected to the appliance outlet, and must fit the fireman's connector supplied with the appliance at the curb.

Separator with manhole primers



Separator with total accessibility



| Reference | Reference total accessibility | Nominal size | Vol. silt storage (l) | Separator volume (l) | Grease retention (l) | Length (mm) | Width (mm) | Height (mm) | FE, T1 inlet (mm) | FE, T2 outlet (mm) | DN connection ext. | Primers chimneys | | Total accessibility | | Lightweight stainless steel pads 1.5 kN |
|-----------|-------------------------------|--------------|-----------------------|----------------------|----------------------|-------------|------------|-------------|-------------------|--------------------|--------------------|------------------|-------------------|----------------------------|-------------------|---|
| | | | | | | | | | | | | No. of primers | Weight empty (kg) | No. cast-iron buffers (mm) | Weight empty (kg) | |
| CA01XAMCH | CA01X033B | 1 | 160 | 240 | 61 | 1015 | 670 | 960 | 260 | 330 | 114 | 1 | 123 | 1 (575x920) | 176 | - |
| CA02XAMCH | CA02X033B | 2 | 310 | 480 | 109 | 1335 | 765 | 1150 | 260 | 330 | 114 | 1 | 157 | 2 (575x670) | 246 | - |
| CA03XAMCH | CA03X033B | 3 | 466 | 720 | 162 | 2000 | 765 | 1150 | 260 | 330 | 114 | 2 | 199 | 3 (575x670) | 334 | CA03X0330 |
| CA04XAMCH | CA04X033B | 4 | 600 | 960 | 297 | 2000 | 1015 | 1200 | 260 | 330 | 114 | 2 | 286 | 3 (575x920) | 437 | CA04X0330 |
| CA06XAMCH | CA06X033B | 6 | 889 | 1440 | 380 | 2665 | 1015 | 1200 | 260 | 330 | 159 | 2 | 354 | 4 (575x920) | 569 | CA06X0330 |
| CA08XAMCH | CA08X033B | 8 | 1021 | 1920 | 509 | 3330 | 1015 | 1200 | 260 | 330 | 159 | 2 | 413 | 5 (575x920) | 682 | CA08X0330 CA09X0330 |

Options :

- ANG2-3.....Level alarm for grease traps
- ANG2-3-N.....Simplified level alarm for grease traps (1 probe possible)
- SNB/SG.....Sludge probe

Additional options for overhead installation

- Possibility of manufacturing on site (consult us)
- Light 1.5kN stainless steel cover available (consult us)