

## GREASE AND STARCH SEPARATOR WITH SILT STORAGE MANHOLES OR FULL ACCESSIBILITY IN STAINLESS STEEL

CNX

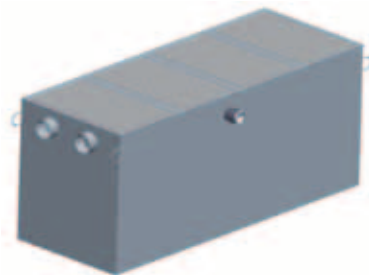
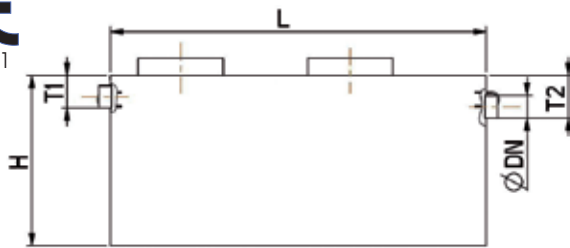
CNXAT



CNX



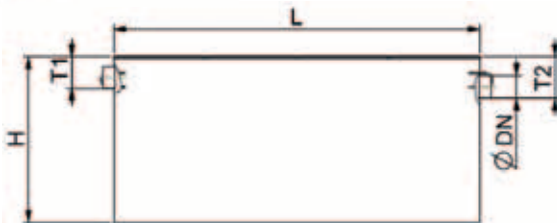
EN 1825-1



CNXAT



EN 1825-1



### Technical Definition

Installation of a grease separator with a silt storage designed according to EN 1825-1 and CE marked (Decree of January 27 2006), operating by gravity flow.

The inter-communal or sanitation regulations and the code of public health require the installation of grease separators.

- Made of stainless steel 304L (EN 1.4307)
- Connection by fitting FF
- Equipped as standard with support for grease level detector.
- Implementation elevation or buried, with the possibility of on-site production (contact us)
- 2 inlets, one for grease, the other for starches, ND 100
- Spray nozzle for starch inlet with a threaded connection ND 20
- 3 functions in one unit : Silt storage, starch separator, grease separator

**Option :** remote suction, racking device ND 80

**Manhole(s)** (diameter 600, height 120mm) without cover(s).

**Full accessibility** with odour-tight covers by hydraulic frame(s) 15, 125, 250, 400kN and cam, type of coverage to choose in the data sheet RHX.

**20 YEAR  
WARRANTY  
AGAINST  
CORROSION**

Manhole reference	Full accessibility Reference	Nominal Size	Silt storage Vol. (l)	Separator Vol. (l)	Grease Vol. (l)	Length (L) mm	Width mm	Height H (mm)	Inlet level (T1) mm	Outlet level (T2) mm	ND connection	Nbr manhole(s)	Weight (kg) empty	Nbr cover(s)		Weight (kg) empty	
														CNX	CNXAT	CNX	CNXAT
CN01XAMCH	CN01X033B	1	160	240	61	1015	670	960	260	330	110	1	123	1	(575x670)	176	
CN02XAMCH	CN02X033B	2	310	480	109	1335	765	1150	260	330	110	1	157	2	(575x670)	246	
CN03XAMCH	CN03X033B	3	466	720	162	2000	765	1150	260	330	110	2	199	3	(575x670)	334	
CN04XAMCH	CN04X033B	4	600	960	297	2000	1015	1200	260	330	110	2	286	3	(575x920)	437	
CN06XAMCH	CN06X033B	6	889	1440	380	2665	1015	1200	260	330	160	2	354	4	(575x920)	569	
CN08XAMCH	CN08X033B	8	1021	1920	509	3330	1015	1200	260	330	160	2	413	5	(575x920)	682	
CN09XAMCH	CN09X033B	9	1350	2160	579	3995	1015	1200	260	330	160	2	475	6	(575x920)	798	

**Important :** Regular maintenance of this equipment according to EN 1825-2 is required. See installation instructions for steel grease separators.

**Manholes :** the system of extension shaft(s) and cover(s) according to EN 124 are not supplied Franceaux.

**Full accessibility :** This grease separator may be equipped with an extension shaft according to the water level (heights available on request). Beyond a load of 125kN, the separator is equipped with an extension shaft. See option extension shafts page 29.