

INSTALLATION INSTRUCTIONS





FLAT TANK ACCESSORY 6022-PLA

M060

* CONTENTS

1. Locate your system configuration.
2. Choose the letter corresponding to the chapter in the manual.

Example: I'm going to install a controller, I need to refer to chapters A and F of this manual

	Submersible pump (in tank)			Surface pump	Water manager
	Watering			Watering	WC, washing machine, sprinkler system
	Quick coupling	Tap	Quick connector + tap		
Watering return kit with quick connector (included) 	included		included		
KPI-1 discharge kit for submersible pump, connection to a 1" pump and discharge via a DN25 compression fitting, possibility of additionally connecting the integrated discharge kit (quick coupling) to the 1" T. 			1		
KRAL32-1: 7m extension kit (can be cut to size if required) for OPAL POOLHOSE DN25 reinforced flexible PVC pipe, fitted with 1" threaded compression fitting and 1" compression fitting. 		1	1	1	1
KASP6 : Kit for connection to overhead pump via DN25 compression fitting, fitted with strainer and float at tank suction 				+	+
				1	1
See chapter	A + B	A + C	A + D	A + E	A + F
N° Page	p.2 + p.3	p.2 + p.5	p.2 + p.7	p.2 + p.10	p.2 + p.12

INSTALLATION INSTRUCTIONS

FLAT TANK ACCESSORY 6022-PLA

M060

A Complete filtration system extraction procedure

1. Open the screw-on lid.
2. Remove PVC elbow.



3. Remove basket by grasping both handles.



Note: The basket can be removed using the handles.



4. To reinstall the filtration system, proceed in reverse order.

INSTALLATION INSTRUCTIONS

FLAT TANK ACCESSORY 6022-PLA

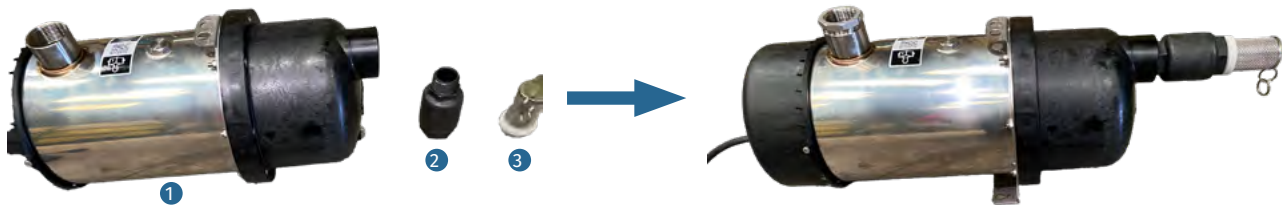
M060

B Using a submersible pump for watering

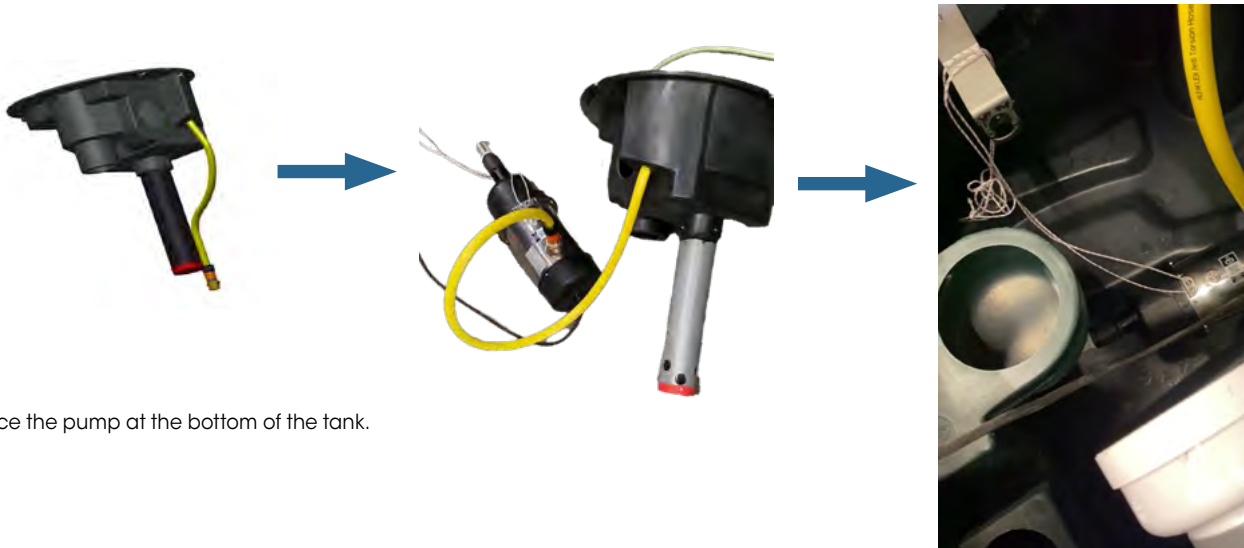
Connect a garden hose to the built-in quick-release coupling.

Equipment: PP58/06-1 pump + delivery kit with quick-release coupling (included with CEPLAT/6022/03 and CEPLAT/6022/05 flat tank)

1. Remove the filter system as described in paragraph A of this manual.
2. Prepare the pump ①
3. Apply Teflon tape to the non-return valve ②
4. Screw the valve to the pump suction port ③
5. Screw the strainer onto the valve.



6. Connect the discharge kit to the pump and fasten the white string to the pump body.
Important: Do not handle the pump by its power cable; use only the white string.



7. Place the pump at the bottom of the tank.

INSTALLATION INSTRUCTIONS

FLAT TANK ACCESSORY 6022-PLA

M060

B continued ...

8. Pass the pump's power supply plug through the "PASSE CÂBLES" seal. Remove the seal with a cutter-type tool.



9. Replace the filtration system and close the cover.



10. Connect the garden hose to the quick-release coupling.

Note: The connector is fitted with a valve that must be opened to activate the pump.



INSTALLATION INSTRUCTIONS

FLAT TANK ACCESSORY 6022-PLA

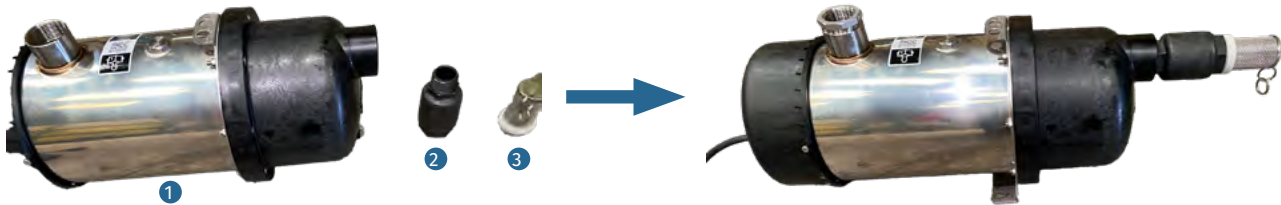
M060

C Using a submersible pump for watering, 1 draw-off point

Watering tap supply

Equipment: Pump PP58/06-1+ Kit KRAL32-1 (optional, see data sheet 6022-PLA)

1. Remove the filtration system as described in paragraph A of this manual.
2. Prepare the pump ①
3. Apply Teflon tape to the non-return valve ②
4. Screw the valve onto the pump suction port. ③
5. Screw the strainer onto the valve.



6. Connect the brass fitting from the KRAL32-1 kit to the pump. Note: Remember to apply Teflon tape to the fitting.



7. Place the pump at the bottom of the tank.
Important: Do not handle the pump by its power cable, but only by the white string.



INSTALLATION INSTRUCTIONS

FLAT TANK ACCESSORY 6022-PLA

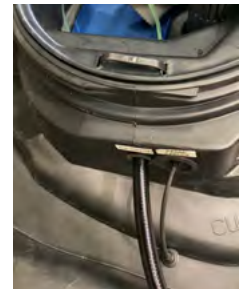
M060

C More...

8. Remove the compression fitting from the OPAL hose.



9. Pass the pump's power supply plug through the "CABLE PASS" seal, and the hose through the "SUCTION" seal. Use a cutter-type tool to open the seals.



10. Reposition the compression fitting and connect it to the power supply of your choice.
11. Replace the filtration system and close the cover.



INSTALLATION INSTRUCTIONS

FLAT TANK ACCESSORY 6022-PLA

M060

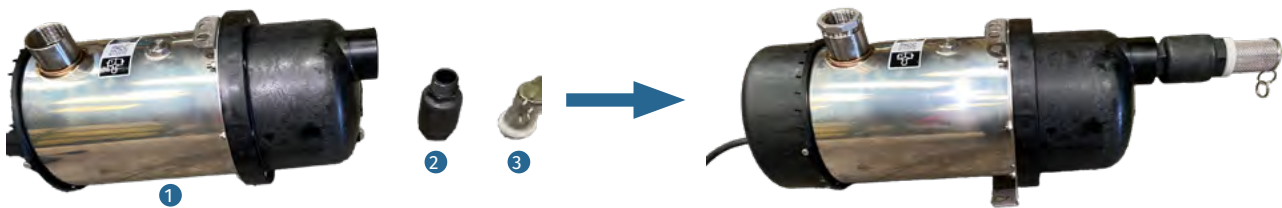
D Using a submersible pump for watering, 2 outlets

Connect a garden hose to the built-in quick-release coupling + supply a garden tap

Equipment: PP58/06-1 pump + delivery kit with quick-release coupling (included with CEPLAT/6022/ 03 and CEPLAT/6022/ 05 flat tanks)

- kit KPI-1(option)
- kit KRAL32-1(option)

1. Remove the filtration system as described in paragraph A of this manual.
2. Prepare the pump ①
3. Apply Teflon tape to the non-return valve ②
4. Screw the valve onto the pump suction port. ③
5. Screw the strainer onto the valve.



6. Connect the KPI-1 kit to the pump via the union
Note: remember to apply Teflon tape to the union



7. Place the pump at the bottom of the tank.
Important: Do not handle the pump by its power cable, but only by the white string.



INSTALLATION INSTRUCTIONS

FLAT TANK ACCESSORY 6022-PLA

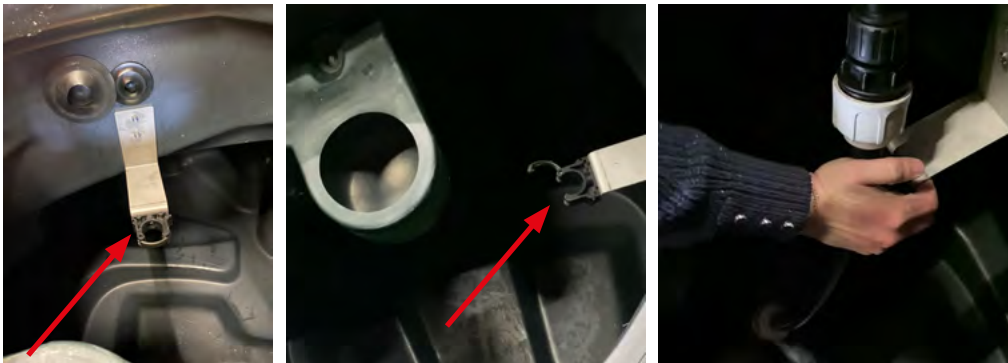
M060

D More...

9. Pass the pump's power supply plug through the "cable feed-through" seal. Use a cutter-type tool to open the seals.



10. Open the monoklip collar (by pressing on it), Fix the KPI-1 tube to the support available in the tank,



11. Unscrew the KRAL32-1 kit compression fitting and pass the Opal tube through the "ASPIRATION" seal.



12. Unscrew the compression fitting from kit KPI-1.



INSTALLATION INSTRUCTIONS

FLAT TANK ACCESSORY 6022-PLA

M060

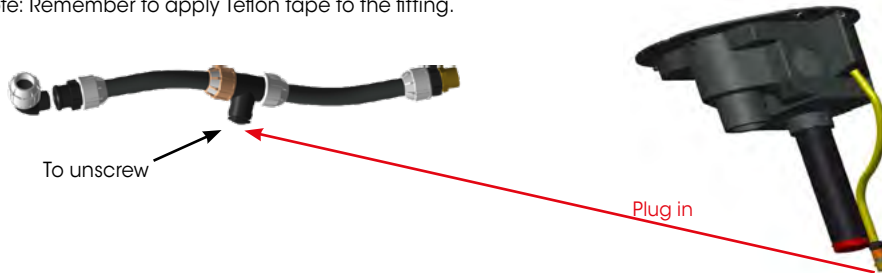
D More...

13. Position it over the Opal tube of the KRAL32-1 kit and assemble the two kits by screwing the



14. Unscrew the fitting on the T of the KPI-1 kit and connect the discharge kit fitting to this T.

Note: Remember to apply Teflon tape to the fitting.



15. Connect the power supply as required: connect the KRAL32-1 kit to a step-type power supply and the quick connector to a garden hose.



16. Replace the filtration system and close the cover.



INSTALLATION INSTRUCTIONS

FLAT TANK ACCESSORY 6022-PLA

M060

E Using a surface-mounted pump for watering

Connecting a garden hose or tap

Equipment: PP58/06-1 pump +

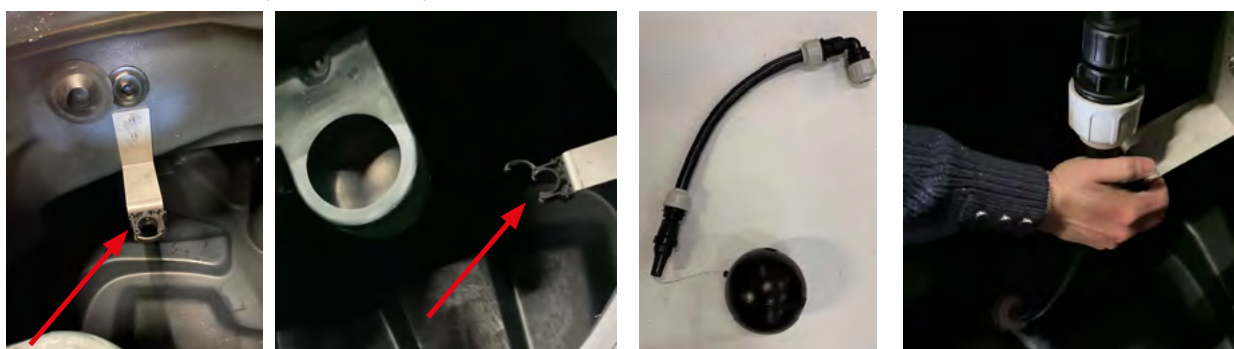
- kASP6 kit(**optional**)

- kRAL32-1 kit(**optional**)

Important: discharge hose (downstream of pump) not supplied

Note: the standard discharge kit will not be used in this configuration.

1. Remove the filtration system as described in paragraph A of this manual.
2. Open the Monoklip collar (by pressing on it) and fix the KASP6 tube to the support available in the tank.



3. Unscrew the compression fitting from the KRAL32-1 kit and pass the Opal tube through the "ASPIRATION" seal. Note: this fitting will not be used in this configuration.



- 4- Unscrew the compression fitting from the kASP6 kit



- 5- Position it on the Opal tube of the kRAL32-1 kit and screw the fitting together.



INSTALLATION INSTRUCTIONS

FLAT TANK ACCESSORY 6022-PLA

M060

E More ...

Prepare the pump

- Apply Teflon tape to the non-return valve
- Screw the valve to the pump suction port

6. Screw the fitting on the KRAL32-1 kit onto the pump's suction port, and fit a hose (not supplied) to discharge the pump to the power supply of your choice.

7. Replace the filtration system and close the cover.



INSTALLATION INSTRUCTIONS

FLAT TANK ACCESSORY 6022-PLA

M060

F Using a manager

WC, washing machine, sprinkler supply

Equipment: PP58/06-1 pump +

- kRAL32-1 kit(**optional**)

- kASP6 kit(**optional**)

Note: the standard discharge kit will not be used in this configuration.

1. Remove the filtration system as described in paragraph A of this manual.
2. Open the Monoklip (by pressing on it) and attach the KASP6 tube to the support in the tank.



3. Unscrew the compression fitting from the KRAL32-1 kit and pass the Opal tube through the "ASPIRATION" seal.

Note: this connection will not be used in this configuration.



- 4- Unscrew the compression fitting from the KASP6 kit



- 5- Position it on the Opal tube of the KRAL32-1 kit and screw the fitting together.



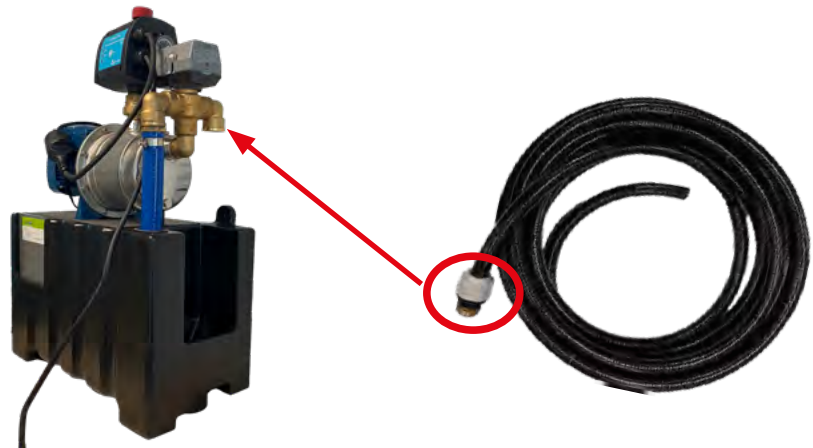
INSTALLATION INSTRUCTIONS

FLAT TANK ACCESSORY 6022-PLA

M060

F More...

6. Screw the KRAL32-1 kit connector onto the manager's suction port.



7. Replace the filtration system and close the cover.

