

## GREASE SEPARATOR

**SILT STORAGE V100 - SIZE 8 TO 20**  
 BURIED INSTALLATION WITH OR WITHOUT WATER TABLE.  
 (ABOVE GROUND ON REQUEST)  
 MAXIMUM BACKFILL HEIGHT OF 500 MM  
 POLYESTER (GRP)

**6622**

### 1 Technical definition

A grease separator is a device designed to separate and store solid matter, fats and oils of animal and vegetable origin contained in household water. A V100 silt storage area is integrated in each unit.

As standard, the unit is equipped with a manhole cover Ø 750 and a screw-on cover Ø 600. On this cover can be mounted screw-on extensions 250mm high (option RH602).

Our units comply with the NF EN 1825-1 standard and are CE marked. The grease retention capacity is 40 litres per l/s.

### 2 Use

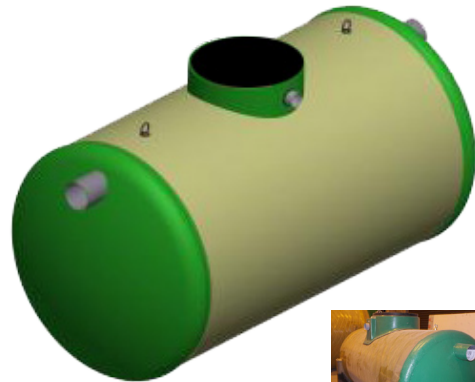
**For small communities and professional installations, collective kitchens, restaurants**, the obligation to install grease separators results from the standard departmental sanitary regulations and the public health code.

**For food processing industries**, it is essential to transmit the CCTP of a technical research department to establish the dimensions of an adapted device.

### 3 Maintenance

The cleaning company should empty the unit regularly, from 15 days to 2 months, depending on the amount of solids and grease collected.

**IMPORTANT** : After each complete emptying, wash the device and fill it immediately with clean water.



GARANTIE CONTRE LA CORROSION JUSQU'À

**20 ANS**

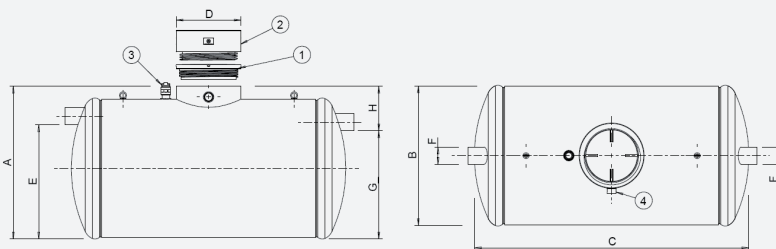
### 4 Installation



**IMPORTANT** : If installed above ground, the room must be equipped with a water collection and drainage system to prevent flooding in the event of an overflow - Please refer to our website to consult the relevant documents, particularly the PHPRV-NC installation instructions.

### 5 Remote extraction

Remote extraction DN80 is possible by ordering the **option OD3/1924**. The installer must supply and install a PVC pressure pipe to be connected to the outlet of the unit and must place the fireman's connection supplied with the option at the curb.



- 1 - Screw-on cover Ø 600
- 2 - Screw-on extension shaft Ø 600, height 250 mm (ref. RH602). Option
- 3 - Remote extraction DN80 (ref. OD3/1924). Option
- 4 - Stitching F Ø 100 (sheath passage if alarm)

Reference	Size	A	Ø B	C	D	E	Ø F	G	H	Silt storage volume (l)	Separator volume (l)	Number of manholes	Number of anchoring belts
SG3/6622/08	8	1582	1312	2738	750	1070	160	1000	582	811	1960	1	2
SG3/6622/10	10	1582	1312	3338	750	1070	160	1000	582	1010	2412	1	2
SG3/6622/12	12	1882	1612	2706	750	1330	200	1260	622	1228	2961	1	2
SG3/6622/15	15	1882	1612	3276	750	1330	200	1260	622	1523	3619	1	2
SG3/6622/18	18	1882	1612	3896	750	1330	200	1260	622	1843	4334	1	2
SG3/6622/20	20	1882	1612	4352	750	1330	200	1260	622	2000	4800	1	2

#### Options :

- RH602 .....Screw-on extension shaft Ø 600, height 250 mm
- ANG3-4 .....Level alarm for grease separators
- ANG3- 4-N.....Simplified level alarm for grease separators (only 1 probe possible)
- SNB/SG ..... Sludge probe
- OD3/1924 ..... Remote extraction device ND80
- CA3/6394/10 T ..... Anchoring belts to be clicked for installation in groundwater or hydromorphic soil

#### Additional options for elevation installation:

- Steel cradles. Width 1530mm for sizes 8 and 10, width 1830mm for sizes 12, 15, 18 and 20.
- UV protective paint, if installed outdoors.